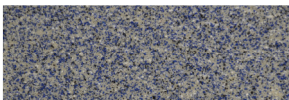


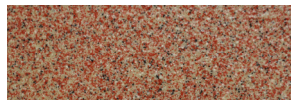
Flowcoat Cascade



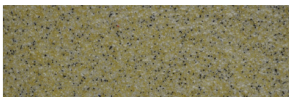
Standard Colour Chart



Aqua



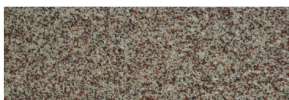
Paprika



Cinnamon



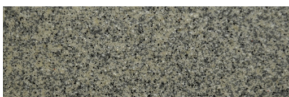
Nutmeg



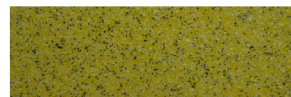
Chilli



Sage



Salt & Pepper



Turmeric

Description

Flowcoat Cascade is a tough, protective chemical resistant, decorative epoxy flooring system incorporating coloured quartz to combine aesthetic appeal with demanding flooring requirements.

Uses

- Change Rooms & Ablutions.
- Corridors.
- Hospitals.
- Packing Halls.
- Prisons.
- Schools.
- Showrooms.
- Studios.
- Veterinary Clinics.
- Food Processing, Beverage & Bottling Plants.

Benefits

- Colourful attractive range to enhance the working environment.
- Long life expectancy - 7 times thicker than conventional epoxy and polyurethane floor coatings.
- Excellent abrasion and scratch resistance.
- Easy to maintain.
- Fast track application.

Substrate Requirements

Steel trowel or power trowelled finish conforming in evenness and level to required tolerance with minimum compressive strength of 20mPa with grano screeds of a minimum thickness of 40mm.

Products Included in this System

Flowcoat Cascade Epoxy + Cascade Aggregate + STB Sealcoat + Super Satin.

Detailed application instructions are available upon request.

Installation Service

The installation should be carried out by a Flowcrete approved contractor with a documented quality assurance scheme. Obtain details of our approved contractors by contacting our customer service team or enquiring via our web site www.flowcretesa.co.za



Technical Information

The figures that follow are typical properties achieved in laboratory tests at 20 °C and at 50% Relative Humidity.

Fire Resistance:	BS476: Partly surface spread of Flowcoat Cascade
Thermal Resistance:	Tolerate up to 70 °C
Water Permeability:	Nil
Surface Hardness:	180 sec Koenig Hardness Test
Abrasion Resistance:	Total abrade 5mg loss per 1000 cycles (BS8204-2)
Compressive Strength:	>60 N/mm ² (BS6319)
Flexural Strength:	>40 N/mm ² (BS6319)
Tensile Strength:	>10 N/mm ² (BS6319)
Bond Strength:	>1.5 mPa – concrete failure

Speed of Cure

	10 °C	20 °C	30 °C
Light traffic	36 hrs	16 hrs	12 hrs
Full traffic	48 hrs	24 hrs	18 hrs
Full chemical cure	12 days	7 days	7 days

Important Note

Flowcrete's products are guaranteed against defective materials and the finished product.

Aftercare - Cleaning and Maintenance

Clean regularly using a single or double headed rotary scrubber drier in conjunction with a mildly alkaline detergent.

Life Expectancy

5-10 Years: depending on traffic density and subject to correct maintenance regime.

Further Information

To ensure you are specifying a fit for purpose flooring for your project please consult our Technical Advisors on the number below or visit our website to register your interest in specifying one of the most durable floors on the market.

Flowcrete SA (Pty) Ltd
176 Voortrekker Street
Jacobs
Durban
Kwa Zulu Natal
Tel: +27 31 461 3411
Fax: +27 31 461 3475

Email: southafrica@flowcrete.com

Flowcrete SA (Pty) Ltd is a subsidiary of Flowcrete Group plc

Flowcrete SA (Pty) Ltd
47 Forge Road
Spartan
Gauteng
Tel: +27 11 394 1980
Fax : +27 11 394 3003

Flowcrete SA (Pty) Ltd
1A Gabriel place
Cnr Gabriel & Main Road
Plumstead
Cape Town
Tel: +27 21 797 0214
Fax: +27 21 761 6664