

## Flowfast Quartz



### Description

Flowfast Quartz is a hard wearing, decorative resin floor topping made up of colour stable quartz granules encapsulated in a clear resin binder. Flowfast Quartz has been developed to enable very fast track applications, typically 90 minutes installation time to receive full traffic, therefore dramatically reducing down time.

### Uses

Ideal for use in production areas, kitchens, wet and dry areas, where the floor is subject to heavy traffic, impact and chemical spills.

### Benefits

- Rapid installation (1 hour complete).
- Decorative floor finish.
- High scratch resistance.
- Easy to clean & maintain.
- Excellent wear and impact resistance.
- Seamless, hygienic finish.
- Abrasion resistant.
- High chemical resistance.
- Excellent slip resistance.

### Model Specification

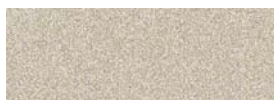
Product: Flowfast Quartz (general specification)  
Finish: Satin  
Thickness: 4mm

Preparatory work and application in accordance with supplier's instructions.

### Substrate Requirements

Concrete or screed substrate should be a minimum of 25N/mm<sup>2</sup>, free from laitance, dust and other contamination. The substrate should be dry to 95% RH as per BS8204 and free from rising damp and ground water pressure. If no damp proof membrane is present Flowfast 108 can be used in replacement of Flowfast 101 (primer) for substrates up to 100% RH (surface dry).

### Standard Colour Chart



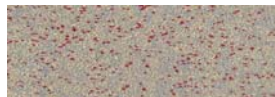
Cream 7700



Grey 7100



Grey 7770



Grey 7120



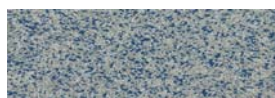
Granite Grey 7600



Red 7510



Yellow 7400



Blue 7200

The applied colours will differ slightly from the examples shown above, due to printing variations. Contact our customer services for a true colour sample or a special colour match.

### Products included in this system

**Primer:** Flowfast 101 @ 0.3-0.5kg/m<sup>2</sup>  
**Scatter:** Coloured Quartz 0.4-0.8mm @ 0.3kg/m<sup>2</sup>  
**Topping:** Flowfast 205 @ 2kg/m<sup>2</sup> mixed with: Coloured Quartz, size 7 (0.7-1.2mm) @ 6kg/m<sup>2</sup>  
**Sealer:** Flowfast 305 @ 0.2kg/m<sup>2</sup>

Detailed application instructions and special primers, binders and sealers for specific requirements are available upon request. Slip resistant profile can be tailored in the system design to meet client requirements.

### Installation Service

The installation should be carried out by a Flowcrete approved contractor with a documented quality assurance scheme. Obtain details of our approved contractors by contacting our customer service team.

### Environmental considerations

The finished system is assessed as non-hazardous to health and the environment. The long service life and seamless surface reduce the need for repairs, maintenance and cleaning. Environmental and health considerations are controlled during manufacture and application of the products by Flowcrete staff and fully trained and experienced contractors.

### Focus on the Floor-zone

Flowcrete Group plc are world leaders in specialist industrial and commercial flooring. Systems available include: underfloor heating systems, floor screeds, surface damp proof membranes, decorative floor finishes, seamless terrazzo, car park deck waterproofing, tank lining systems... to name just a few. Our objective is to satisfy your Floorzone needs.

### Flooring Design Service

Special corporate colours and designs can be produced to special order.

### Important Note

Flowcrete's products are guaranteed against defective materials and the finished product.

### Technical Information

The figures that follow are typical properties achieved in laboratory tests at 20 °C and at 50% Relative Humidity.

Slip Resistance: (SRV)	Method described in BS7976-2 (Typical values for 4-S rubber slider) Dry >40 Wet>35 Dry >70 (with slip resistant profile) Wet>60 (with slip resistant profile)
Impact Resistance:	ISO6272 1kg weight >1.8m 2kg weight >1.5m
Temperature Resistance:	Tolerant of sustained temperatures up to 70 °C
Water Permeability:	Nil-Karsten Test (impermeable)
Chemical Resistance:	Good resistance to tea, coffee, cola, fruit juice, soaps and bleach (for specific chemicals please consult chemical resistant chart)
Abrasion Resistance:	BS8204-2: Class AR1 Heavy duty industrial and commercial
Bond Strength:	Greater than cohesive strength of 25 N/mm <sup>2</sup> concrete > 1.5mPa
Compressive Strength:	60 N/mm <sup>2</sup> (BS6319)
Flexural Strength:	20 N/mm <sup>2</sup> (BS6319)
Tensile Strength:	15 N/mm <sup>2</sup> (BS6319)

### Speed of Cure (per layer)

Full traffic & chemical cure 1Hr  
Cure at ambient temperatures in the range -10 °C to +35 °C can be achieved by altering the quantity of catalyst used. For applications below -10 °C please contact our Technical Department.

### Aftercare - Cleaning and Maintenance

Clean regularly using a single or double headed rotary scrubber drier in conjunction with a mildly alkaline detergent.

### Life Expectancy

10 years, subject to correct maintenance regime.

### Further Information

To ensure you are specifying a fit for purpose flooring for your project please consult our Technical Advisors on the number below or visit our website to register your interest in specifying one of the most durable floors on the market.

Flowcrete SA (Pty) Ltd  
176 Voortrekker Street  
Jacobs  
Durban  
Kwa Zulu Natal  
Tel: +27 31 461 3411  
Fax: +27 31 461 3475

Flowcrete SA (Pty) Ltd  
47 Forge Road  
Spartan  
Gauteng  
Tel: +27 11 394 1980  
Fax: +27 11 394 3003

Flowcrete SA (Pty) Ltd  
1A Gabriel place  
Cnr Gabriel & Main Road  
Plumstead  
Cape Town  
Tel: +27 21 797 0214  
Fax: +27 21 761 6664

2008.02.01 South Africa