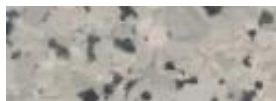


## Flowfast Terosso



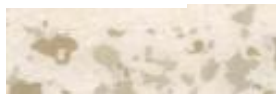
### Standard colour chart



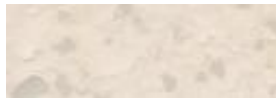
Dali



Picasso



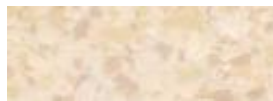
Renoir



Monet



Da Vinci



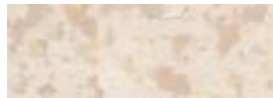
Van Gogh



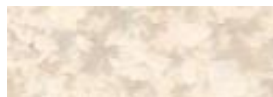
Klimt



Matisse



Michelangelo



Rembrandt

### Description

Flowfast Terosso is a hard wearing, decorative resin floor topping made up of colour stable flakes encapsulated in a clear resin binder. Flowfast Terosso has been developed to enable very fast track applications, typically 90 minutes installation time to receive full traffic; therefore dramatically reducing down time.

### Uses

Ideal for public areas, shops and showrooms, department stores, designer outlets, restaurants, garden centres, airports, schools and hospitals.

### Benefits

- Attractive decorative finish.
- Extensive design potential.
- High scratch resistance.
- Easy to clean & maintain.
- Seamless, hygienic finish.
- High chemical resistance.
- Rapid installation.
- Wear resistant surface for wheeled traffic.

### Model Specification

Product: Flowfast Terosso

Finish: Satin

Thickness: 3mm

Preparatory work and application in accordance with supplier's instructions.

### Substrate Requirements

Concrete or screed substrate should be a minimum of 25N/mm<sup>2</sup>, free from laitance, dust and other contamination. The substrate should be dry to 95% RH as per BS8204 and free from rising damp and ground water pressure. If no damp proof membrane is present Flowfast 108 can be used in replacement of Flowfast 101(primer) for substrates up to 100% RH (surface dry).

### Products included in this system

**Primer:** Flowfast 101 @ 0.3-0.5kg/m<sup>2</sup>  
**Scatter:** Natural Quartz 0.4-0.8mm @ 0.3kg/m<sup>2</sup>  
**Flowfast SL:** Flowfast 205 @ 1.5kg/m<sup>2</sup> mixed with:  
Flowfast Pigment Powder @ 3% weight  
Flowfast Resin  
Flowfast SNL Filler @ 3.0kg/m<sup>2</sup>  
**Scatter:** Flowfast Flake @ 0.5 kg/m<sup>2</sup> (to excess)  
**Sealer:** Flowfast 307 @ 0.25 kg/m<sup>2</sup> coat (3coats) to obtain a smooth surface

(Plus additional coats @ 0.2 kg/m<sup>2</sup> as required)

### Installation Service

The installation should be carried out by a Flowcrete approved contractor with a documented quality assurance scheme. Obtain details of our approved contractors by contacting our customer service team.

### Environmental considerations

The finished system is assessed as non-hazardous to health and the environment. The long service life and seamless surface reduce the need for repairs, maintenance and cleaning. Environmental and health considerations are controlled during manufacture and application of the products by Flowcrete staff and fully trained and experienced contractors.

### Focus on the Floor-zone

Flowcrete Group plc are world leaders in specialist industrial and commercial flooring. Systems available include: underfloor heating systems, floor screeds, surface damp proof membranes, decorative floor finishes, seamless terrazzo, car park deck waterproofing, tank lining systems... to name just a few. Our objective is to satisfy your Floorzone needs.

### Flooring Design Service

Special corporate colours and designs can be produced to special order.

### Important Note

Flowcrete's products are guaranteed against defective materials and the finished product.

### Technical Information

The figures that follow are typical properties achieved in laboratory tests at 20 °C and at 50% Relative Humidity.

Slip Resistance: (SRV)	Method described in BS7976-2 (Typical values for 4-S rubber slider) Dry 50 min Wet 20 min With graded aggregate incorporated: Dry 60 min Wet 50 min
Impact Resistance:	ISO6272 1kg weight >1.8m 2kg weight >1.5m
Temperature Resistance:	Tolerant of sustained temperatures up to 50 °C
Water Permeability:	Nil-Karsten Test (impermeable)
Chemical Resistance:	Good resistance to tea, coffee, cola, fruit juice, soaps and bleach
Abrasion Resistance:	BS8204-2: Class AR2- Heavy duty industrial and commercial
Bond Strength:	Greater than cohesive strength of 25 N/mm <sup>2</sup> concrete > 1.5mPa

### Speed of Cure (per layer)

Full traffic & Full chemical cure 1Hr

Cure at ambient temperatures in the range -10 °C to +35 °C can be achieved by altering the quantity of catalyst used. The system can be cured down to -30 °C with the addition of a resin additive.

### Life Expectancy

10 years, depending on traffic density and subject to correct maintenance regime.

### Aftercare - Cleaning and Maintenance

Clean regularly using a single or double headed rotary scrubber drier in conjunction with a mildly alkaline detergent.

### Further Information

To ensure you are specifying a fit for purpose flooring for your project please consult our Technical Advisors on the number below or visit our website to register your interest in specifying one of the most durable floors on the market.

Flowcrete SA (Pty) Ltd  
176 Voortrekker Street  
Jacobs  
Durban  
Kwa Zulu Natal  
Tel: +27 31 461 3411  
Fax: +27 31 461 3475

Flowcrete SA (Pty) Ltd  
47 Forge Road  
Spartan  
Gauteng  
Tel: +27 11 394 1980  
Fax: +27 11 394 3003

Flowcrete SA (Pty) Ltd  
1A Gabriel place  
Cnr Gabriel & Main Road  
Plumstead  
Cape Town  
Tel: +27 21 797 0214  
Fax: +27 21 761 6664

Email: [southafrica@flowcrete.com](mailto:southafrica@flowcrete.com)  
Flowcrete SA (Pty) Ltd is a subsidiary of Flowcrete Group plc

[www.flowcrete.com](http://www.flowcrete.com)