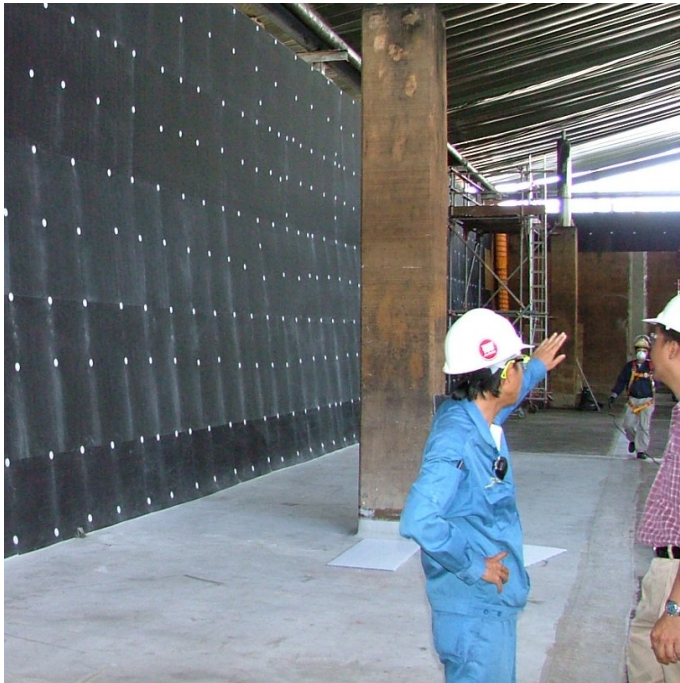


Flowchem Honeycomb C (10 mm)



Description

Flowchem Honeycomb C is an insulating, extruded polypropylene honeycombed board with conductive polyester non-woven fabric faces, to be used only in conjunction with the Flowchem VE GL vinyl ester resin lining. High performance (HP) grade available for heavy traffic conditions.

Uses

For isolation from concrete and masonry structures prior to the application of a glass fibre reinforced lining system, which will provide resistance to continuous or occasional exposure from heavy duty chemical, thermal and mechanical attack.

Benefits

- Insulation and isolation from existing structure
- Low electrically resistant surface – spark testing
- Provides sound platform for the Flowchem VE GL
- No surface preparation or repair required
- Bridges cracks and movement joints
- Tolerant of damp or wet conditions
- Leak detection and drainage benefits
- Suitable for new construction and renovation

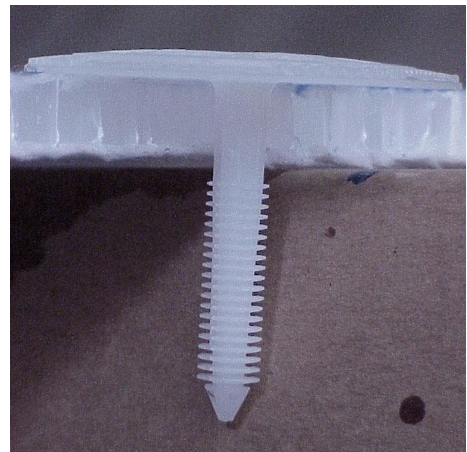
Project References

BP (Amoco); BP Chemicals ; UCB - B.A.S.F.

Colours

Black.

System Design - Fixing



Model Specification

Product: Flowchem Honeycomb C Board (or C-HP Board)
Finish: Conductive
Thickness: 10 mm
Colour: Black
Manufacturer: Flowcrete SA (Pty) Ltd
Telephone : Customer Service - +27 31 461 3411
Preparatory work and application in accordance with manufacturer's instructions.

Products Included in this System

Board: Flowchem Honeycomb C: 2.5 m x 1.2 m x 10 mm board

Or Flowchem Honeycomb C-HP: 2.5 m x 1.2 m x 10 mm board

Finish: Flowchem VE GL @ 3 - 4 kg/m² (~3 mm thickness)

- depending on weight of the glass reinforcement used

NB: Specifications are written for each installation to meet the clients particular requirements.

Installation Service

The installation should be carried out by a Flowcrete approved contractor with a documented quality assurance scheme. Obtain details of our approved contractors by contacting our customer service team or enquiring via our web site www.flowcretesa.co.za

Environmental considerations

The finished system is assessed as non-hazardous to health and the environment. The long service life and seamless surface reduce the need for repairs, maintenance and cleaning.

Environmental and health considerations are controlled during the manufacture and application of the products by Flowcrete staff and fully trained and experienced contractors.

Focus on the Floorzone

Flowcrete SA (Pty) Ltd is a division of the Flowcrete Group, world leaders in specialist industrial and commercial flooring. Systems available include: underfloor heating systems, floor screeds, surface damp proof membranes, decorative floor finishes, seamless terrazzo, car park deck waterproofing and corrosion protection systems... to name just a few. Our corporate objective is to satisfy your flooring needs.

Important Note

Flowcrete's products are guaranteed against defective materials and manufacture and are sold subject to its standard Terms and Conditions of Sale, copies of which can be obtained on request.

Technical Information

The figures that follow are typical properties achieved in laboratory tests at 20 °C and at 50% Relative Humidity.

Properties for the Flowchem Honeycomb C Board

Compressive strength	1.3 MPa (ISO 844)
E Modulus	15 MPa (ISO 844)
Tensile strength (perpendicular)	0.5 MPa (NFT 56130)
Shear strength	0.5 MPa (ISO 1922)
Shear modulus	8 MPa
Density	80 kg/m²
Temperature resistance	Softening point 125 °C
Electrical conductance	3.5 Kilohms / cm²

Properties for the Flowchem VE GL

Temperature Resistance	Tolerant up to 145 °C
Chemical Resistance	Contact Technical Department
Barcol hardness	> 50 (ASTM 2583)
E-Modulus	3.1 GPa (ASTM D-695)
Volume Shrinkage	< 0.004 % Rill 4 2.5.3.2.1
Compressive Strength	160 MPa (ASTM D-695)
Flexural Strength	125 MPa (ASTM D-790)
Tensile Strength	73 MPa (ASTM D-638)
Adhesion	> 4 MPa (Note: substrate failure)
Density	1.01

Life Expectancy

5 - 10 years dependant on the service conditions and the maintenance regime.

Further Information

To ensure you are specifying a fit for purpose flooring for your project please consult our Technical Advisors on the number below or visit our website to register your interest in specifying one of the most durable floors on the market.