

Flowshield Quartz



Description

Smooth, glossy, self-smoothing resin floor finish with a decorative speckled finish. Ideal for a minimalist. A modern and a contemporary environment. Surprise your customers with your creativity - use Flowshield Quartz to make a statement.

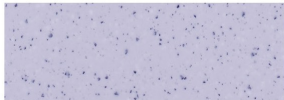
Uses

Ideal for areas with intensive traffic such as shops, department stores, restaurants, garden centres, garages and airports.

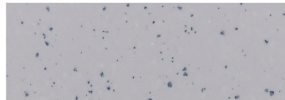
Benefits

- Attractive and colourful floor finish.
- Easy to clean and maintain.
- Hard wearing.
- Environmentally friendly (no dust).
- High chemical resistance.

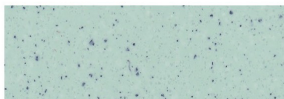
Standard Colour Chart



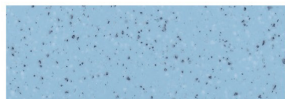
Polar Mist



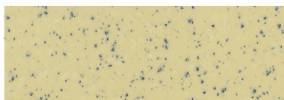
Goosewing Grey



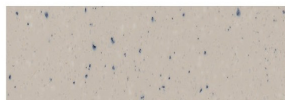
Mint Green



Sky Blue



Vanilla Yellow



Beige

System Design



The applied colours will differ slightly from the examples shown above, due to printing variations. Contact our customer services for a true colour sample or a special colour match.

Model Specification

Product: Flowshield Quartz
Finish: Gloss
Thickness: 2 mm
Colour: Various (as per colour chart)
Manufacturer: Flowcrete SA (Pty) Ltd
Telephone : Customer Service +27(0)31 461 3411

Preparatory work and application in accordance with supplier's instructions.

Substrate Requirements

Concrete or screed substrate should be a minimum of 25N/mm², free from laitance, dust and other contamination. The substrate should be dry to 75% RH as per BS 8204 and free from rising damp and ground water pressure. If no damp proof membrane is present Flowcem DPM can be incorporated directly beneath the Flowshield Quartz system.

Products Included in this System

Primer: Flowprime
Topping: Flowshield Quartz

For optional sealers and slip resistant dressing please consult our Technical Advisors.

Detailed application instructions are available upon request.

Substrate Requirements

Concrete or screed substrate should be a minimum of 20N/mm², free from laitance, dust and other contamination. The substance should be free from rising damp and ground water pressure. If no damp membrane is present Flowcem DPM can be incorporated directly beneath the Flowshield Quartz system.

Installation Service

The installation should be carried out by a Flowcrete approved contractor with a documented quality assurance scheme. Obtain details of our approved contractors by contacting our customer service team or enquiring via our web site www.flowcretesa.co.za

Environmental considerations

The finished system is assessed as non-hazardous to health and the environment. The long service life and seamless surface reduce the need for repairs, maintenance and cleaning. Environmental and health considerations are controlled during manufacture and application of the products by Flowcrete staff and fully trained and experienced contractors.

Focus on the Floor-zone

Flowcrete Group are world leaders in specialist industrial and commercial flooring. Systems available include: underfloor heating systems, floor screeds, surface damp proof membranes, decorative floor finishes, seamless terrazzo, car park deck waterproofing, tank lining systems... to name just a few. Our objective is to satisfy your Floorzone needs.

Technical Information

The figures that follow are typical properties achieved in laboratory tests at 20 °C and at 50% Relative Humidity.

Fire Resistance:	BS 476: Part 7: Surface spread of flame- class 2 (indicative)
Slip Resistance: (SRV)	Method described in BS 7976-2 Dry 78 Wet 14 (typical values for 4-S rubber slider)
Thermal Resistance:	Tolerant of sustained temperatures up to 50°C
Water Permeability:	Nil- Karsten test (impermeable)
Chemical Resistance:	Go to www.flowcrete.com
Abrasion Resistance:	BS 8204-2 Class AR2- Medium duty industrial and commercial
Compressive Strength:	55 N/mm ² (BS 6319)
Flexural Strength:	23 N/mm ² (BS 6319)
Tensile Strength:	13 N/mm ² (BS 6319)
Bond Strength:	Greater then cohesive strength of 25 N/mm ² concrete > 1.5mPa
Toxicity (when cured):	Taint free to sensitive foodstuff

Speed of Cure

	10°C	20°C	30°C
Light traffic	24hrs	12hrs	6hrs
Full traffic	72hrs	48hrs	24hrs
Full chemical cure	12 days	7 days	7days

Aftercare - Cleaning and Maintenance

Clean regularly using a single or double headed rotary scrubber drier in conjunction with a mildly alkaline detergent.

Further Information

To ensure you are specifying a fit for purpose flooring for your project please consult our Technical Advisors on the number below or visit our website to register your interest in specifying one of the most durable floors on the market.

Important Note

Flowcrete's products are guaranteed against defective materials and manufacture and are sold subject to its standard Terms and Conditions of Sale, copies of which can be obtained on request.