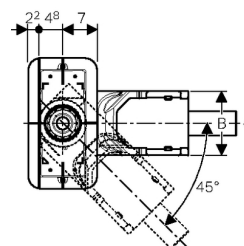
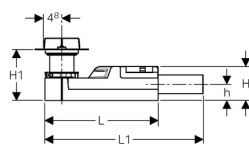
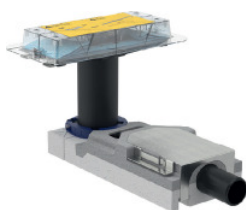


Installation set for Geberit shower channels of the CleanLine series, floor construction height from 65 mm

PRO_170944



Verwendungszwecke / Application Purposes

- For installation inside buildings
- For drainage of Geberit shower channels of the CleanLine series
- For floor constructions of 65–90 mm
- For composite seals
- For receiving waste water from a single shower head
- For installation with a very low floor construction

Eigenschaften / Characteristics

- Deviating from the requirements from EN 1253, the depth of water seal is just 30 mm
- Minimum screed height at inlet 65 mm
- Sealing fleece, pre-mounted, 10 cm circumferential, for connecting sealing systems
- Base unit made of EPS, for sound decoupling and receiving the trap

Technische Daten / Technical Data

Depth of water seal

30 mm

Lieferumfang / Scope of delivery

- Protection box cover with reference line
- Thin bed bonding flange
- Trap made of PE-HD
- Fastening material

Bestelltabelle / Order Table

Art. no.	DN	d, ø[mm]	B[cm]	H[cm]	H1[cm]	h[cm]	L[cm]	L1[cm]
154.152.00.1	40	40	13	6.5	6.5-17.5	3.2	30	35.8

Zusätzlich zu bestellen / To order additionally

Shower channel of the CleanLine series

Zubehör / Accessories

Geberit shower channel CleanLine20 Geberit shower channel CleanLine60 Geberit shower channel CleanLine60 for thin floorings

Interne Daten / Internal Data

Art. no.	Material short text	Sales launch date	GS	Assortment status
154.152.00.1	Inst set CleanLine d40 h65	2015-04-01	50	Active

Logistik Daten / Logistic Data

Art. no.	PU1[Pc.]	PU2[Pc.]	PU1 - L x W x H[mm]	VP2 - L x W x H[mm]	Gross weight[kg]	Net weight[kg]
154.152.00.1	1	4	395 x 190 x 220	430 x 385 x 392	1.092	0.887

